

Original Research Article

TRPS1 AS A SUPERIOR SITE MARKER OVER GATA3 IN TRIPLE NEGATIVE BREAST CANCERS

Anusha Mullagura¹, Ramya Potti², Inuganti Venkata Renuka Shaik³, Raheema⁴, Sudhakar Ramamoorthy⁵

¹Assistant Professor, Department of Pathology, NRI Medical College, Chinakakani, Mangalagiri, Guntur, AP, India.

²Associate professor, Department of Pathology, NRI Medical College, Chinakakani, Mangalagiri, Guntur, AP, India.

³Professor and HOD, Department of Pathology, NRI Medical College, Chinakakani, Mangalagiri, Guntur, AP, India.

⁴Postgraduate, Department of Pathology, NRI Medical College, Chinakakani, Mangalagiri, Guntur, AP, India.

⁵Professor, Department of Pathology, NRI Medical College, Chinakakani, Mangalagiri, Guntur, AP, India.

Received : 15/01/2025
Received in revised form : 10/03/2025
Accepted : 26/03/2025

Corresponding Author:

Dr. Ramya Potti,
Associate professor, Department of Pathology, NRI Medical College, Chinakakani, Mangalagiri, Guntur, AP, India.
Email: ramfeb225@gmail.com

DOI: 10.70034/ijmedph.2025.1.342

Source of Support: Nil,
Conflict of Interest: None declared

Int J Med Pub Health
2025; 15 (1); 1833-1837

ABSTRACT

Background: Trichorhinophalangeal syndrome type 1 (TRPS1) encodes a novel nuclear transcription factor, belonging to the GATA family. It is a recently identified IHC marker and is more sensitive and specific than the other breast-specific markers. **Aims and Objectives:** To understand the prevalence and potential role of TRPS1 protein expression in triple-negative breast tumors. To evaluate the diagnostic utility of TRPS1 in comparison with GATA3. To assess the impact of TRPS1 with histopathological parameters in triple-negative breast carcinomas.

Materials and Methods: This was a study done in the pathology department in the last 3 years. A total of 15 triple-negative breast carcinoma cases were included in the study. All the relevant clinical and histopathological data were retrieved from the records. Immunohistochemical markers TRPS1 and GATA3 were used in all 15 cases.

Results: In this study, 53% of cases were seen in age >50 years, and the left breast was involved in 60%. The typical histological type was Invasive ductal carcinoma (67%), grade 3 (60%), and lymphovascular invasion (LVI) was absent in 53% of cases. The ROC curve analyzed TRPS1 (p-value of < 0.05) as a highly sensitive and specific marker than GATA3 (p=0.7). TRPS1 correlated with the grade of the tumor with a significant p-value of 0.04

Conclusion: TRPS1 is a highly sensitive and specific marker to confirm breast origin and can be used as a diagnostic tool, especially for Triple Negative Breast Carcinomas.

Keywords: TRPS1, GATA3, triple-negative breast carcinoma, Immunohistochemistry, Histopathology.

INTRODUCTION

Breast cancer comprises the most common cancer in females (38.8%) and is categorized into 4 types based on molecular classification.^[1] Triple-negative breast cancer (TNBC) can pose a diagnostic challenge because it may show both non-specific morphological features and immunostain profiles.^[1] Since TNBC is an aggressive tumor with a worse prognosis and a high tendency to relapse, accurate diagnosis is essential for optimal treatment.^[2] Immunohistochemistry is used to identify breast primary in occult nodal metastases and to differentiate primary breast carcinomas against metastatic tumors to the breast.^[3]

Unlike ER, PR, and Her2neu positive breast cancer cases, where these IHCs may help to confirm breast primary, triple-negative breast cancers require other breast-specific markers like GATA3 (70-90%), mammaglobin (50-80%) and GCDFP15 (15-40%).^[4] However, studies showed that these markers were not highly sensitive to be used in TNBCs, hence a search for a better IHC marker was initiated. Subsequently, trichorhinophalangeal syndrome type 1 (TRPS1) a novel nuclear transcription factor, belonging to the GATA family was identified and studied for its relevance in terms of breast-specificity. It is expressed in normal mammary epithelial cells and also retained in cells that undergo malignant transformation.^[5]

The study aims to understand the prevalence of TRPS1 protein expression in triple-negative breast tumors and elucidate the diagnostic utility of TRPS1 in comparison with GATA3. To assess the impact of TRPS1 on clinicopathological parameters in triple-negative breast carcinomas.

MATERIALS AND METHODS

This is a cross-sectional study done in the Pathology department for 2 years. A total of 15 Triple-negative breast Carcinoma cases diagnosed in mastectomy specimens were included in the study. All the relevant clinical and histopathological data were obtained. The IHC markers ER, PR, and Her2 neu negativity were checked. IHC markers TRPS1 and GATA3 were used in all 15 cases.

The Immunoreactivity scores of TRPS1 (ZR382/Rabbit/monoclonal from zeta corporation) were calculated by multiplying the score representing % of immunoreactive cells (0, <1%; 1, 1-10%; 2, 11-50%; 3, 51-100%) with the number representing staining intensity (0, negative; 1, weak; 2, moderate; 3, strong). The Immunoreactivity scores were considered negative (0-1), low positive (2), intermediate positive (3-4), and high positive (6-9).

The distribution of GATA3 (L50-823, Cell morque, Rockin, CA) was recorded as negative if < 5% of tumor cells showed nuclear staining and positive if >5% of tumor cells showed nuclear staining.

The data collected was expressed in percentage and a comparison of TRPS1 and GATA3 was done using ROC curve analysis p value was calculated and ≤ 0.05 was considered significant.

Inclusion Criteria: All TNBC cases diagnosed on mastectomy specimens were included in the study

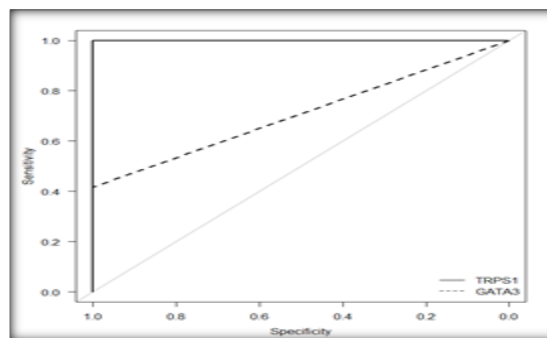
Exclusion Criteria: TNBC core needle biopsies/lumpectomy specimens and those with insufficient clinical/pathological data were excluded

RESULTS

In this study, we investigated the immunohistochemical marker expression of TRPS1 and GATA3 in triple-negative breast carcinomas (Figure 5&6).

The diagnostic values of TRPS1 and GATA3 were evaluated for each case and tabulated in Table 2 and 3.

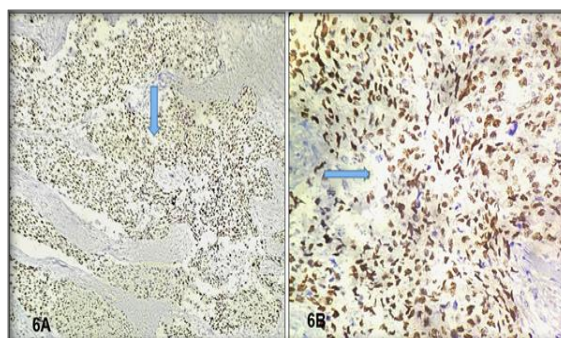
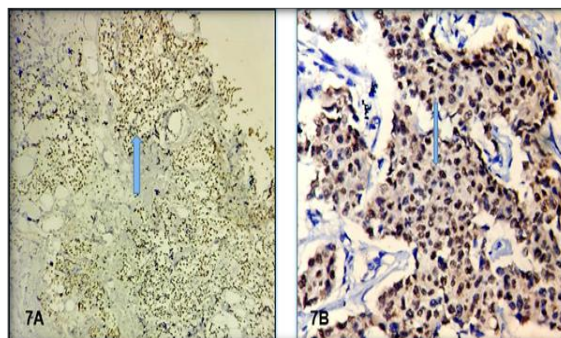
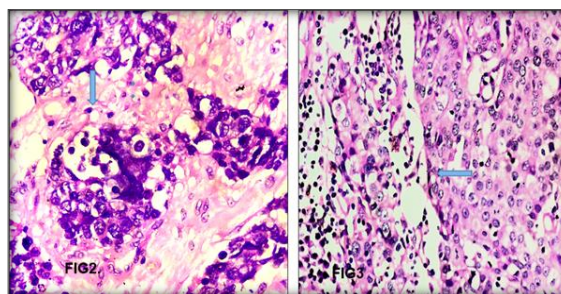
To compare the sensitivity of TRPS1 with GATA3 Area under the curve was calculated which showed a significant p-value of <0.05 thus concluding that TRPS1 is a more sensitive marker than GATA3.

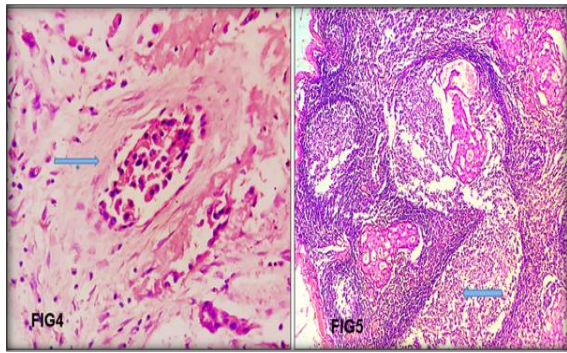


TRPS1 has a significant p value (<0.05) than GATA3(0.7).
GATA3 has the sensitivity of 0.42 and specificity of 1.

Figure 1: The comparative area under curve for TRPS1 and GATA3

In this study, we compared the expression of TRPS1 with pathological parameters of breast carcinoma. There was a significant p-value with histological grade (0.04), and it is insignificant with tumor size, lymphovascular invasion, and pT stage, as shown in Table 4.





LEGENDS

Fig 2: shows ductal carcinoma with tumor cells in nests H&E 400x

Fig 3: shows medullary patterns with tumor cells in syncytial sheets & lymphocytic infiltration H&E 200x

Fig 4: shows lymphovascular invasion H&E 400x

Fig 5: shows lymphnode with metastatic deposits H&E 100x

Figure-5: trps1 positivity invasive

A.Trps1: nuclear staining in the tumors cells : 100x

B.Trps1: nuclear staining in the tumors cells: 400x

Figure-6: Gata3 positivity

A.Gata3: positive nuclear staining in >5% of tumor cells : 100x

B.Gata3: positive nuclear staining in >5% of tumor cells : 400x.

The clinicopathological characteristics have been tabulated in Table 1

Table 1: Clinicopathological characteristics of Triple negative breast carcinomas

Parameter	Total number of cases (%)
Age(yrs)	
<50	7 (47%)
>50	8 (53%)
Multiplicity	
Multifocal	1 (7%)
unifocal	14 (93%)
Tumor size	
<2cm	2 (14%)
2-5cm	5 (33%)
>5cm	8 (53%)
Laterality	
Right	6 (40%)
left	9 (60%)
Histological grades	
Grade 1	1(7%)
Grade 2	5 (33%)
Grade 3	9 (60%)
Histological Types	
Invasive carcinoma (NST)	10 (67%)
Medullary carcinoma	2 (13%)
Invasive lobular carcinoma	2 (13%)
Metaplastic carcinoma	1 (7%)
Lymph nodal metastasis	
N0	8 (53%)
N1	2 (13%)
N2	2 (13%)
N3	3 (20%)

Table 2: Distribution of GATA3 and TRPS1 positive cases in the current study

IHC MARKER	Number of cases	positive	Negative
GATA3	15	5(33%)	10(67%)
TRPS1	15	12(80%)	3(20%)

Table 3: Expression of TRPS1 and GATA3 in different histological types

Histological type	Number of cases	TRPS 1	GATA3
Medullary carcinoma	2	+	+
Metaplastic carcinoma	1	+	-
Lobular carcinoma	1	+	+
	1	-	-
Invasive carcinoma of no special type	2	-	-
	2	+	+
	6	+	-

Table 4: Fisher Exact Test Results

Parameter	TRPS1positive	TRPS1 negative	P Value
Size			
<2cms	2	0	0.98
2-5cms	5	1	
>5cms	5	2	
Histological Grade			
1	0	1	0.044
2	3	2	
3	9	0	
LVI			
Present	5	2	0.076
Absent	7	1	
pTstage			
T1	2	0	1
T2	4	1	
T3	5	2	
T4	1	0	

DISCUSSION

TNBC is classified into 6 tumor-specific subtypes by gene expression profiling, including basal-like 1, basal-like 2, immunomodulatory, mesenchymal, mesenchymal stem-like, and luminal AR subtypes.^[6] Most TNBCs are basal types of IBCs.

TRPS1 is a breast lineage biomarker and is highly expressed in both ER luminal and TN/basal types of breast carcinoma, as shown in previous studies.^[7] On the contrary, GATA3 involves breast luminal differentiation and is a luminal cell marker, mainly expressed in luminal A and B types of IBC, but not in TN/basal-like IBC.^[8] Therefore the sensitivity of TRPS1 I TNBC is better than that of GATA3 because more than 90% of TNBCs are positive for TRPS1 and almost all GATA3 negative TNBCs are positive for TRPS1.

In the present study, 8 out of 15 cases (53%) were more than 50 years, which is in contrast to the study done by Elaiffy et al,^[1] in which all 70[100%]cases were >50 yrs., and 9[60%] cases showed left breast involvement, which is in contrast to the study done by Elaiffy et al,^[1] i.e., 37[53%]cases.

In the present study, 8 [53%] cases showed the size of the tumor to be >5cms which is in contrast to the study done by Elaiffy et al,^[1] in which 53[75.7%] cases showed < 2 cm. Ten [67%] cases showed invasive carcinoma NST(fig 1) which is in contrast to the study done by Elaiffy et al i.e, 31[45%] cases and 9 [63%] cases showed grade 3, which in contrast to the study done by Elaiffy et al,^[1] i.e, 25[35.7%]cases. Two cases (14%) showed medullary carcinoma (fig 2) which was in contrast to the study done by Joshua W Lui et al [10], i.e.,49 cases(2.5%).

In our study, a p-value of TRPS1 is 0.00008 which is in contrast to the study done by Nadia E. Elafify et al,^[1] and Ai et al[constituting p=0.0000 and p=0.0001 respectively. TRPS1 sensitivity is 80%, which is in contrast to the study done by Nadia E. Elafify et al,^[1] Lennarte et al[3], and Ai et al,^[2] which are 93%,77%, and 86% respectively.

In the present study, GATA 3 sensitivity is 42% which is in contrast to the study done by Nadia E. Elafify et al,^[1] Lennartz et al,^[3] & Ai et al,^[2] constituting 80%,55%, and 51% respectively.

In the present study,7(47%) out of 15 cases showed lymphovascular invasion(figure 3) which is in contrast to the study done by Nadia E. Elafify et al,^[1] i.e, 44 cases(62.9%).out of 15 cases in the present study,8 (53%)cases showed N0,2(13%) cases showed N1,2 (13%) showed N2(lymph node metastasis)(figure 4),3 (20%) cases showed N3 which is in contrast to the study done by Nadia E. Elafify et al,^[1] i.e,29 cases(41.4%) showed N0,10(14.3%)cases showed N1,17 cases (24.3%) showed N2,15 cases(20%) showed N3.

TRPS1 has a diagnostic sensitivity of 100% in TNBC and is higher than the sensitivity of TNBCs that are positive for GATA3. In addition to a much higher diagnostic sensitivity in detecting TNBC, TRPS1 is a more robust immunostaining marker than GATA3, with diffuse and strong nuclear staining in most of the positive cases. In contrast, GATA3-positive cases tend to show intermediate to weak nuclear staining.^[9]

In our study, TRPS1(figure 5) showed diffuse positivity in (12/15) cases which are 80%, GATA3 (figure 6) was positive in (10/15 cases) at 67% whereas in the study done by Terrance J.Lynn et al,^[9] s TRPS1 positivity (35/35) was 100% and GATA 3 positivity(27/35) was 77%.

In a total of 15 cases of TNBCs with data on TRPS1 expression, 12 cases (80%) were TRPS1 positive for the remaining 3 cases (20%) were negative. GATA3 was positive in 10 cases (67%), so an additional 2 cases were positive for TRPS1.

Three cases were negative for both breast markers. They were grade 3 with necrosis, less differentiated, and more aggressive. We should be aware of the lack of expression for breast-specific markers.

In our study, TRPS1 is a more highly sensitive marker than GATA3 which is similar to the study conducted by, Di Ai et al.^[2]

CONCLUSION

The study demonstrates that TRPS1 is a highly reliable marker to confirm breast primary in triple-negative carcinomas of the breast, surpassing the current widely used GATA3. Given its performance, TRPS1 could be considered a vital marker to confirm breast primary nodal metastasis of unknown origin.

REFERENCES

1. Elafify, N., Alshenawy, H., Harris, H., Helal, D. Diagnostic Utility of Trichorhinophalangeal Syndrome Type 1 (TRPS1) immunostain in breast carcinoma compared to GATA3. *Egyptian Journal of Cancer and Biomedical Research*, 2023;7(3): 13-22.
2. Ai, D, Yao, J., Yang, F., Huo, L., Chen, H., Lu, W., et al. TRPS1: a highly sensitive and specific marker for breast carcinoma, especially for triple-negative breast cancer. *Modern Pathology*, 2021;34(4):710- 719.
3. Lennartz M, Löhr N, Höflmayer D, Dwertmann Rico S, von Bargen C, Kind S et al. TRPS1 is a Highly Sensitive Marker for Breast Cancer: A Tissue Microarray Study Evaluating More Than 19,000 Tumors From 152 Different Tumor Entities. *Am J Surg Pathol*. 2024 Jun 1;48(6):637-651.
4. Wendroth SM, Mentrikoski MJ, Wick MR. GATA3 expression in morphologic subtypes of breast carcinoma: a comparison with gross cystic disease fluid protein 15 and mammaglobin. *Ann Diagn Pathol*. 2015;19:6-9.
5. Wang J, Peng Y, Sun H, Aung PP, Resetkova E, Yam C, Sahin AA, Huo L, Ding Q. TRPS1 and GATA3 Expression in Invasive Breast Carcinoma With Apocrine Differentiation. *Arch Pathol Lab Med*. 2024;148(2):200-205.
6. Lehmann BD, Jovanovic B, Chen X, et al. Refinement of triple-negative breast cancer molecular subtypes: implications for neoadjuvant chemotherapy selection. *PLoS One*. 2016;11(6):e0157368.
7. Wang J, Wang WL, Sun H, et al. Expression of TRPS1 in phyllodes tumor and sarcoma of the breast. *Hum Pathol*. 2022;121:73-80.
8. Cimino-Mathews A, Subhawong AP, Illei PB, et al. GATA3 expression in breast carcinoma: utility in triple-negative, sarcomatoid, and metastatic carcinomas. *Hum Pathol*. 2013;44(7):1341-1349.
9. Lynn TJ, Shi J, Liu H, Monaco SE, Prichard JW, Lin F. Trichorhinophalangeal Syndrome Type 1 Is a Highly Sensitive and Specific Marker for Diagnosing Triple-Negative Breast Carcinomas on Cytologic Samples. *Arch Pathol Lab Med*. 2024 Jan 1;148(1):e1-e8. doi: 10.5858/arpa.2022-0411-OA. PMID: 37406296.
10. Lui J W, Tsang J Y, Li J, Ko C-W, Tam F, Loong T C-W & Tse G M (2024) *Histopathology* 84, 822-836. <https://doi.org/10.1111/his.15126>.